

Stabilized telehandlers

Panoramic 50.18



**PERFORMANCE AND FEATURES****P50.18CSTOP****P50.18PLUS****Performance**

Unladen weight (kg)

13650

13300

Maximum load capacity (kg)

5000

5000

Lift height (m)

17.5

17.5

Maximum reach (m)

13.5

13.5

Lift height at max. load capacity (m)

9.2

9.2

Reach at max. load capacity (m)

3.7

3.7

Load capacity at max. lift height (m)

2500

2500

Load capacity at max. reach (kg)

750

750

Boom side-shift (mm)

+/- 445

+/- 445

Frame levelling (%)

+/- 8

+/- 8

Boom section

4

4

Powertrain

Engine

Perkins 904J

Perkins 904J

Range/Cylinders

3600/4

3600/4

Engine power (kW/HP)

85,9/115

85,9/115

Anti-pollution technology

Stage V - SCR + DPF +

Stage V - SCR + DPF +

Reversible Fan

●

●

Maximum speed (km/h)

40

40

Fuel tank capacity (l)

140

140

AdBlue tank capacity (l)

18

18

Hydrostatic transmission

TOP- 2V

YES - 2V

EPD

STD

STD

Joystick autoaccelerante

STD

STD

Axles

Drop portal

Drop portal

Reducers

RR 700

RR 700

Brakes

Dry discs

Dry discs

Hydraulic

Hydraulic pump

LS + FS

LS

Delivery / pressure (L / MIN - BAR)

145 - 250

104 - 250

Hydraulic oil tank capacity (l)

110

110

Auxiliary hydraulic service on boom

●

●

Rear service line

○

○

Cab

Cab finishing

ECO

ECO

ASCS

Full

Full

FOPS II Cab

●

●

ROPS Cab

●

●

Controls

Electronic joystick control

Electronic joystick control

Tilting cab

-

-

Reverse shuttle

Dual reverse

Dual reverse

Configuration

Hydropneumatic Suspension CS Merlo

●

-

Hydropneumatic Suspension BSS Merlo

○

○

Hydropneumatic Suspension EAS Merlo

-

-

Work lights on cab

○

○

Sun-shade in the cab

○

○

Tac-lock

●

●

Pre-arrangement for aerial work platform

○

○

Two floating forks

●

●

Pedal Inching-Control

●

●

Permanent four-wheel drive

●

●

All wheel steering

●

●

Three steering way

●

●

Standard tyres

OPT tyres

Hydraulically controlled stabilizers

Turret rotation

-

-

Tractor type approval

-

-

Pneumatic brakes (ton)

-

-

Hydraulic brakes (ton)

-

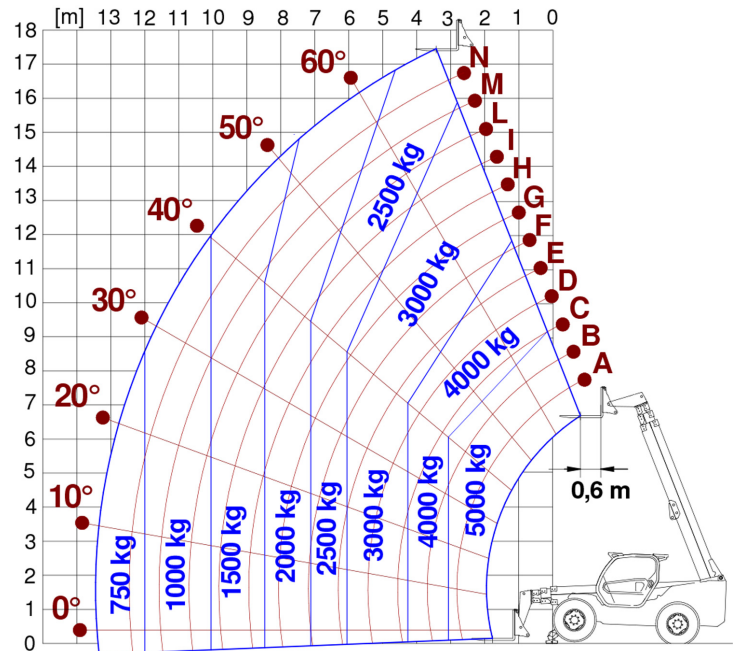
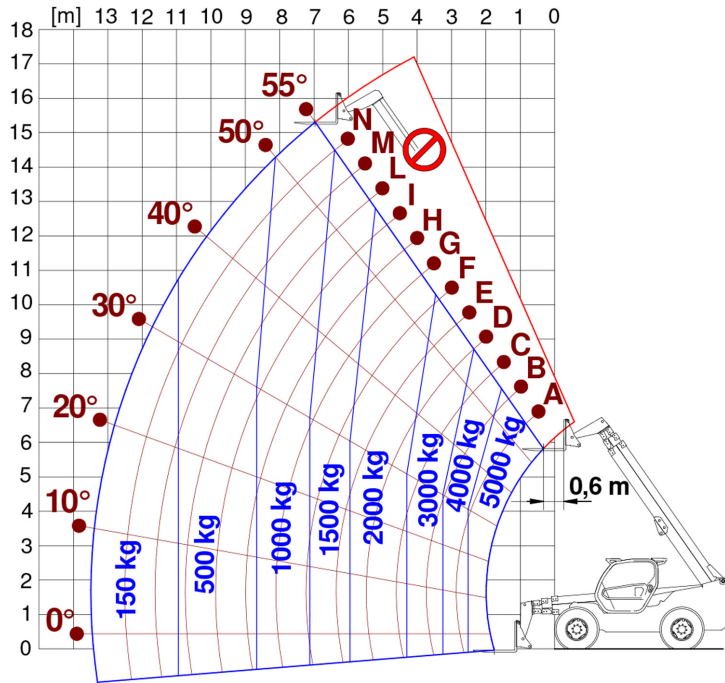
-

PTO

3-point rear linkage



- not available
● standard
○ optional



Dimensions



	P50.18CSTOP	P50.18PLUS	
A - Length	6190	1745	
C - Wheelbase	3060	5067	
F - Ground clearance	485	485	
H - Width	2480	2480	
M - Cabin width	1010	1010	
P - Height	2535	2535	
R - Turning radius at wheels	4265	4265	
S - Turning radius at forks	5611	5611	

Your Merlo dealer

MERLO S.P.A.

Via Nazionale, 9

12010 S. Defendente di Cervasca, (Cuneo) Italia

Tel. +39 0171 614111

Fax +39 0171 684101

info@merlo.com

www.merlo.com



