

# Rotating telehandlers

Roto 40.18



**PERFORMANCE AND FEATURES****ROTO40.18S****ROTO40.18****Performance**

Unladen weight (kg)	13600	13500	
Maximum load capacity (kg)	4000	4000	
Lift height (m)	17.7	17.7	
Maximum reach (m)	15	15	
Lift height at max. load capacity (m)	11.7	11.7	
Reach at max. load capacity (m)	5.5	5.5	
Load capacity at max. lift height (m)	3000	3000	
Load capacity at max. reach (kg)	400	400	
Boom side-shift (mm)	-	-	
Frame levelling (%)	+/-12, +/-4	-	
Boom section	4	4	

**Powertrain**

Engine	FPT F36	FPT F34	
Range/Cylinders	3600/4	3400/4	
Engine power (kW/HP)	90/122	55,4/75	
Anti-pollution technology	Stage V - DOC + DPf+ SCR	Stage V - DOC + DPf	
Reversible Fan	-	-	
Maximum speed (km/h)	40	25	
Fuel tank capacity (l)	140	140	
AdBlue tank capacity (l)	18		
Hydrostatic transmission	YES - 2V	YES - 2V	
EPD	STD	STD	
Joystick autoaccelerante	STD	STD	
Axles	Drop portal	Drop portal	
Reducers	RR 700	RR 700	
Brakes	Dry discs	Dry discs	

**Hydraulic**

Hydraulic pump	LS + FS	LS + FS	
Delivery / pressure (L / MIN - BAR)	103,5 - 250	103,5 - 250	
Hydraulic oil tank capacity (l)	162	162	
Auxiliary hydraulic service on boom	●	●	
Rear service line	-	-	

**Cab**

Cab finishing	PREMIUM	PREMIUM	
ASCS	Full	Full	
FOPS II Cab	●	●	
ROPS Cab	●	●	
Controls	Electronic joystick control	Electronic joystick control	
Tilting cab			
Reverse shuttle	Dual reverse	Dual reverse	

**Configuration**

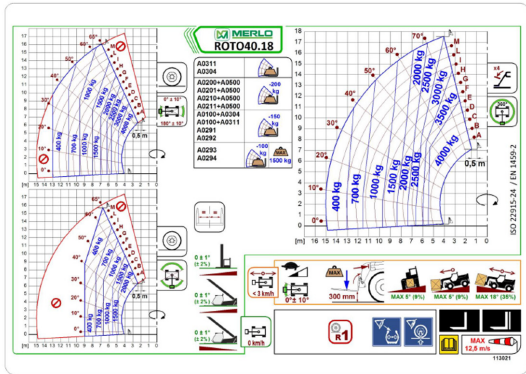
Hydropneumatic Suspension CS Merlo	-	-	
Hydropneumatic Suspension BSS Merlo	-	-	
Hydropneumatic Suspension EAS Merlo	●	-	
Work lights on cab	○	○	
Sun-shade in the cab	●	●	
Tac-lock	●	●	
Pre-arrangement for aerial work platform	●	●	
Two floating forks	●	●	
Pedal Inching-Control	-	-	
Permanent four-wheel drive	●	●	
All wheel steering	●	●	
Three steering way	●	●	
Standard tyres			
OPT tyres			
Hydraulically controlled stabilizers			
Turret rotation			
Tractor type approval			
Pneumatic brakes (ton)			
Hydraulic brakes (ton)			
PTO			
3-point rear linkage			

- not available
- standard
- optional



MAX. RISPONDERE PER

3



MAX

Dimensions



	ROTO40.18S	ROTO40.18	
A - Length	6030	-	
C - Wheelbase	2860	4750	
F - Ground clearance	290	290	
H - Width	2240	2240	
M - Cabin width	1010	1010	
P - Height	2980	2980	
R - Turning radius at wheels	4000	4000	
S - Turning radius at forks	5750	5750	

**Your Merlo dealer**

**MERLO S.P.A.**

Via Nazionale, 9

12010 S. Defendente di Cervasca, (Cuneo) Italia

Tel. +39 0171 614111

Fax +39 0171 684101

[info@merlo.com](mailto:info@merlo.com)

[www.merlo.com](http://www.merlo.com)



