

Rotating telehandlers

Roto 70.28



**PERFORMANCE AND FEATURES****ROTO70.28SPLUS-CVTRONIC****Performance**

Unladen weight (kg)	22750
Maximum load capacity (kg)	7000
Lift height (m)	28
Maximum reach (m)	23.2
Lift height at max. load capacity (m)	9.9
Reach at max. load capacity (m)	6.5
Load capacity at max. lift height (m)	3000
Load capacity at max. reach (kg)	850
Boom side-shift (mm)	-
Frame levelling (%)	+/-12, +/-4
Boom section	4

Powertrain

Engine	FPT NEF45
Range/Cylinders	4500/4
Engine power (kW/HP)	125/170
Anti-pollution technology	Stage V - DOC + DPF+ SCR
Reversible Fan	-
Maximum speed (km/h)	40
Fuel tank capacity (l)	150
AdBlue tank capacity (l)	43
Hydrostatic transmission	CVTronic
EPD	STD
Joystick autoaccelerante	STD
Axles	Axial
Reducers	Epicyclic
Brakes	Wet discs

Hydraulic

Hydraulic pump	2 - LS + FS
Delivery / pressure (L / MIN - BAR)	158+100 - 260
Hydraulic oil tank capacity (l)	220
Auxiliary hydraulic service on boom	●
Rear service line	

Cab

Cab finishing	PREMIUM
ASCS	Full
FOPS II Cab	●
ROPS Cab	●
Controls	Electronic joystick control
Tilting cab	●
Reverse shuttle	Dual reverse

Configuration

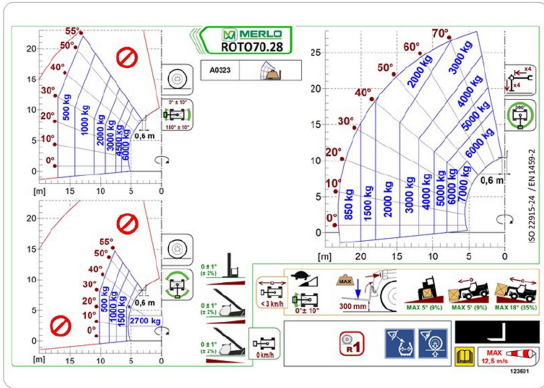
Hydropneumatic Suspension CS Merlo	-
Hydropneumatic Suspension BSS Merlo	○
Hydropneumatic Suspension EAS Merlo	●
Work lights on cab	●
Sun-shade in the cab	●
Tac-lock	●
Pre-arrangement for aerial work platform	●
Two floating forks	●
Pedal Inching-Control	-
Permanent four-wheel drive	●
All wheel steering	●
Three steering way	●
Standard tyres	
OPT tyres	
Hydraulically controlled stabilizers	
Turret rotation	
Tractor type approval	
Pneumatic brakes (ton)	
Hydraulic brakes (ton)	
PTO	
3-point rear linkage	



- not available
 ● standard
 ○ optional



02 - E



20

Dimensions



	ROTO70.28PLUS-CVTRONIC		
A - Length	8310		
C - Wheelbase	3780		
F - Ground clearance	315		
H - Width	2540		
M - Cabin width	1010		
P - Height	3325		
R - Turning radius at wheels	4840		
S - Turning radius at forks	6920		

Your Merlo dealer

MERLO S.P.A.

Via Nazionale, 9

12010 S. Defendente di Cervasca, (Cuneo) Italia

Tel. +39 0171 614111

Fax +39 0171 684101

info@merlo.com

www.merlo.com



