

Rotating telehandlers

Roto 40.16



**PERFORMANCE AND FEATURES****ROTO40.16****ROTO40.16S****Performance**

Unladen weight (kg)	12900	13000
Maximum load capacity (kg)	4000	4000
Lift height (m)	15.8	15.8
Maximum reach (m)	13.2	13.2
Lift height at max. load capacity (m)	10.1	10.1
Reach at max. load capacity (m)	5.5	5.5
Load capacity at max. lift height (m)	2500	2500
Load capacity at max. reach (kg)	700	700
Boom side-shift (mm)	-	-
Frame levelling (%)	-	+/-12, +/-4
Boom section	3	3

**Powertrain**

Engine	FPT F34	FPT F36
Range/Cylinders	3400/4	3600/4
Engine power (kW/HP)	55,4/75	90/122
Anti-pollution technology	Stage V - DOC + DPF	Stage V - DOC + DPF+ SCR
Reversible Fan	-	-
Maximum speed (km/h)	25	40
Fuel tank capacity (l)	140	140
AdBlue tank capacity (l)		18
Hydrostatic transmission	YES - 2V	YES - 2V
EPD	STD	STD
Joystick autoaccelerante	STD	STD
Axles	Drop portal	Drop portal
Reducers	RR 700	RR 700
Brakes	Dry discs	Dry discs

**Hydraulic**

Hydraulic pump	LS + FS	LS + FS
Delivery / pressure (L / MIN - BAR)	103,5 - 250	103,5 - 250
Hydraulic oil tank capacity (l)	162	162
Auxiliary hydraulic service on boom	●	●
Rear service line	-	-

**Cab**

Cab finishing	PREMIUM	PREMIUM
ASCS	Full	Full
FOPS II Cab	●	●
ROPS Cab	●	●
Controls	Electronic joystick control	Electronic joystick control
Tilting cab		
Reverse shuttle	Dual reverse	Dual reverse

**Configuration**

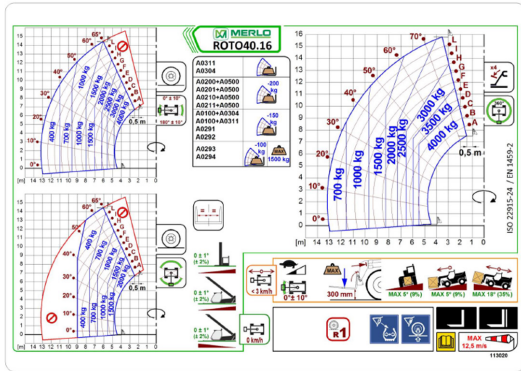
Hydropneumatic Suspension CS Merlo	-	-
Hydropneumatic Suspension BSS Merlo	-	-
Hydropneumatic Suspension EAS Merlo	-	●
Work lights on cab	○	○
Sun-shade in the cab	●	●
Tac-lock	●	●
Pre-arrangement for aerial work platform	●	●
Two floating forks	●	●
Pedal Inching-Control	-	-
Permanent four-wheel drive	●	●
All wheel steering	●	●
Three steering way	●	●
Standard tyres		
OPT tyres		
Hydraulically controlled stabilizers		
Turret rotation		
Tractor type approval		
Pneumatic brakes (ton)		
Hydraulic brakes (ton)		
PTO		
3-point rear linkage		

- not available
- standard
- optional



MAX. RESISTENZA 20t

3



M2

Dimensions



	ROTO40.16	ROTO40.16S	
A - Length	6280	-	
C - Wheelbase	2860	4750	
F - Ground clearance	290	290	
H - Width	2240	2240	
M - Cabin width	1010	1010	
P - Height	2980	2980	
R - Turning radius at wheels	4000	4000	
S - Turning radius at forks	5930	5930	

Your Merlo dealer

MERLO S.P.A.

Via Nazionale, 9

12010 S. Defendente di Cervasca, (Cuneo) Italia

Tel. +39 0171 614111

Fax +39 0171 684101

info@merlo.com

www.merlo.com



