

Rotating telehandlers

Roto 70.24





PERFORMANCE AND FEATURES

Performance

Unladen weight (kg)	20200	19500	
Maximum load capacity (kg)	7000	7000	
Lift height (m)	24.2	24.2	
Maximum reach (m)	20.5	20.5	
Lift height at max. load capacity (m)	7.4	7.4	
Reach at max. load capacity (m)	5.9	5.9	
Load capacity at max. lift height (m)	3000	3000	
Load capacity at max. reach (kg)	900	900	
Boom side-shift (mm)	-	-	
Frame levelling (%)	+/-12, +/-4	+/-12, +/-4	
Boom section	4	4	

Powertrain

Engine	FPT NEF45	FPT NEF45	
Range/Cylinders	4500/4	4500/4	
Engine power (kW/HP)	125/170	125/170	
Anti-pollution technology	Stage V - DOC + DPf+ SCR	Stage V - DOC + DPf+ SCR	
Reversible Fan	-	-	
Maximum speed (km/h)	40	40	
Fuel tank capacity (l)	150	150	
AdBlue tank capacity (l)	43	43	
Hydrostatic transmission	YES - 2V	YES - 2V	
EPD	STD	STD	
Joystick autoaccelerante	STD	STD	
Axles	Axial	Axial	
Reducers	Epicyclic	Epicyclic	
Brakes	Dry discs	Dry discs	

Hydraulic

Hydraulic pump	2 - LS + FS	LS + FS	
Delivery / pressure (L / MIN - BAR)	138+100 - 250/230	138 - 250	
Hydraulic oil tank capacity (l)	120	120	
Auxiliary hydraulic service on boom	●	●	
Rear service line	-		

Cab

Cab finishing	PREMIUM	PREMIUM	
ASCS	Full	Full	
FOPS II Cab	●	●	
ROPS Cab	●	●	
Controls	Electronic joystick control	Electronic joystick control	
Tilting cab	●	-	
Reverse shuttle	Dual reverse	Dual reverse	

Configuration

Hydropneumatic Suspension CS Merlo	-	-	
Hydropneumatic Suspension BSS Merlo	○	○	
Hydropneumatic Suspension EAS Merlo	●	●	
Work lights on cab	○	○	
Sun-shade in the cab	●	●	
Tac-lock	●	●	
Pre-arrangement for aerial work platform	●	●	
Two floating forks	●	●	
Pedal Inching-Control	-	-	
Permanent four-wheel drive	●	●	
All wheel steering	●	●	
Three steering way	●	●	
Standard tyres			
OPT tyres			
Hydraulically controlled stabilizers			
Turret rotation			
Tractor type approval			
Pneumatic brakes (ton)			
Hydraulic brakes (ton)			
PTO			
3-point rear linkage			

ROTO70.24SPLUS

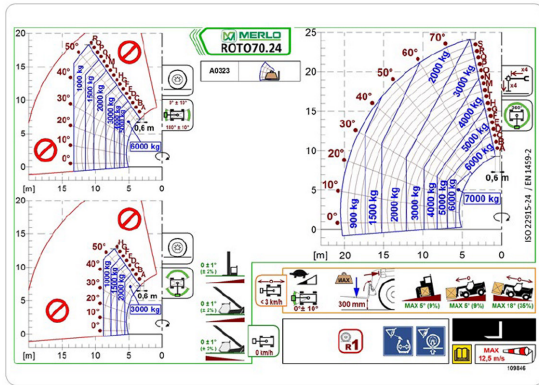
ROTO70.24S



- not available
● standard
○ optional



02 - E



20

Dimensions



	ROTO70.24SPPLUS	ROTO70.24S	
A - Length	7545	-	
C - Wheelbase	3200	5620	
F - Ground clearance	290	290	
H - Width	2490	2490	
M - Cabin width	1010	1010	
P - Height	3160	3160	
R - Turning radius at wheels	4500	4500	
S - Turning radius at forks	6770	6770	

Your Merlo dealer

MERLO S.P.A.

Via Nazionale, 9
12010 S. Defendente di Cervasca, (Cuneo) Italia
Tel. +39 0171 614111
Fax +39 0171 684101

info@merlo.com
www.merlo.com



