

# Stabilized telehandlers

Panoramic 40.14



**PERFORMANCE AND FEATURES****P40.14CSTOP****P40.14PLUS****P40.14****Performance**

Unladen weight (kg)	10300	9950	9950
Maximum load capacity (kg)	4000	4000	4000
Lift height (m)	13.5	13.5	13.5
Maximum reach (m)	9.3	9.3	9.3
Lift height at max. load capacity (m)	10.7	10.7	10.7
Reach at max. load capacity (m)	3.56	3.56	3.5
Load capacity at max. lift height (m)	3000	3000	3000
Load capacity at max. reach (kg)	1000	1000	1000
Boom side-shift (mm)	+/- 345	+/- 345	+/- 345
Frame levelling (%)	+/- 8	+/- 8	+/- 8
Boom section	3	3	3

**Powertrain**

Engine	Perkins 904J	Perkins 904J	Kohler KDI 2504
Range/Cylinders	3600/4	3600/4	2500/4
Engine power (kW/HP)	85,9/115	85,9/115	55,4/75,1
Anti-pollution technology	Stage V - SCR + DPF + DOC	Stage V - SCR + DPF + DOC	Stage V - DOC + DPF
Reversible Fan	●	●	●
Maximum speed (km/h)	40	40	33
Fuel tank capacity (l)	140	140	140
AdBlue tank capacity (l)	18	18	-
Hydrostatic transmission	TOP- 2V	YES - 2V	YES - 2V
EPD	STD	STD	STD
Joystick autoaccelerante	STD	STD	STD
Axles	Drop portal	Drop portal	Drop portal
Reducers	RR 700	RR 700	RR 700
Brakes	Dry discs	Dry discs	Dry discs

**Hydraulic**

Hydraulic pump	LS + FS	LS	LS
Delivery / pressure (L / MIN - BAR)	145 - 250	104 - 250	104 - 250
Hydraulic oil tank capacity (l)	100	100	100
Auxiliary hydraulic service on boom	●	●	●
Rear service line	○	○	○

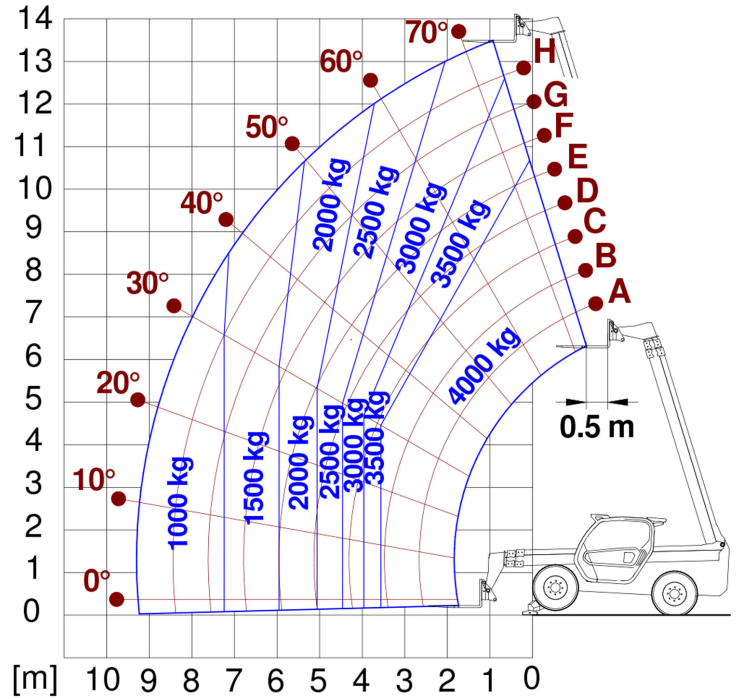
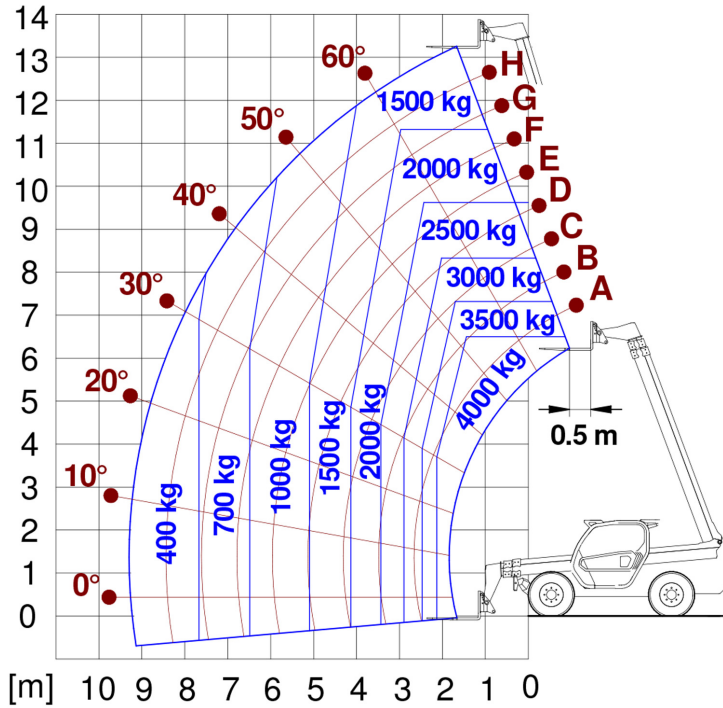
**Cab**

Cab finishing	ECO	ECO	ECO
ASCS	Full	Full	Light
FOPS II Cab	●	●	●
ROPS Cab	●	●	●
Controls	Electronic joystick control	Electronic joystick control	Electronic joystick control
Tilting cab	—	—	—
Reverse shuttle	Dual reverse	Dual reverse	Dual reverse

**Configuration**

Hydropneumatic Suspension CS Merlo	●	—	—
Hydropneumatic Suspension BSS Merlo	○	○	○
Hydropneumatic Suspension EAS Merlo	—	—	—
Work lights on cab	○	○	○
Sun-shade in the cab	○	○	○
Tac-lock	●	●	●
Pre-arrangement for aerial work platform	○	○	○
Two floating forks	●	●	●
Pedal Inching-Control	●	●	●
Permanent four-wheel drive	●	●	●
All wheel steering	●	●	●
Three steering way	●	●	●
Standard tyres	—	—	—
OPT tyres	—	—	—
Hydraulically controlled stabilizers	—	—	—
Turret rotation	—	—	—
Tractor type approval	—	—	—
Pneumatic brakes (ton)	—	—	—
Hydraulic brakes (ton)	—	—	—
PTO	—	—	—
3-point rear linkage	—	—	—

— not available  
● standard  
○ optional



Dimensions



	P40.14CSTOP	P40.14PLUS	P40.14
A - Length	5750	1645	1645
C - Wheelbase	2810	4640	4640
F - Ground clearance	375	375	375
H - Width	2240	2240	2240
M - Cabin width	1010	1010	1010
P - Height	2425	2425	2425
R - Turning radius at wheels	3920	3920	3920
S - Turning radius at forks	5040	5040	5040

**Your Merlo dealer**

**MERLO S.P.A.**

Via Nazionale, 9

12010 S. Defendente di Cervasca, (Cuneo) Italia

Tel. +39 0171 614111

Fax +39 0171 684101

[info@merlo.com](mailto:info@merlo.com)

[www.merlo.com](http://www.merlo.com)



